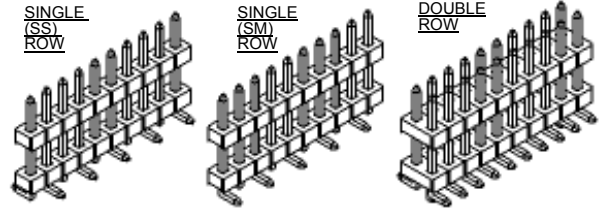
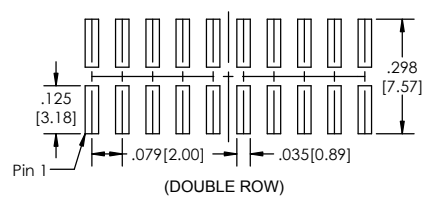
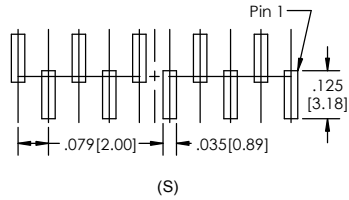
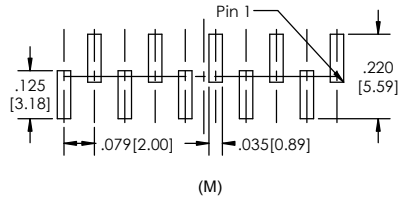


Recommended P.C. Board Layout
SCALE 4:1

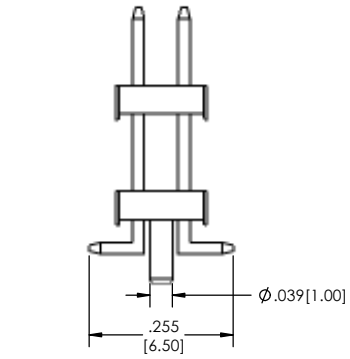
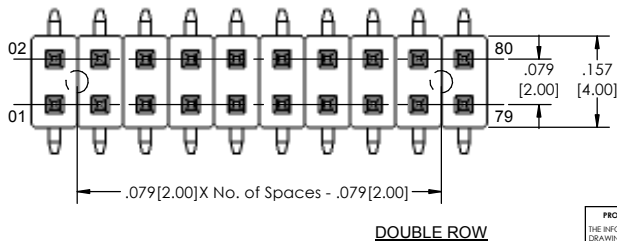
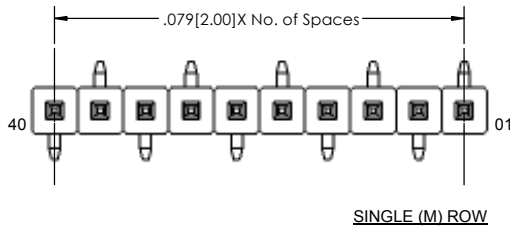
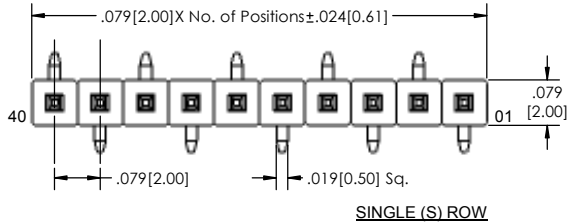
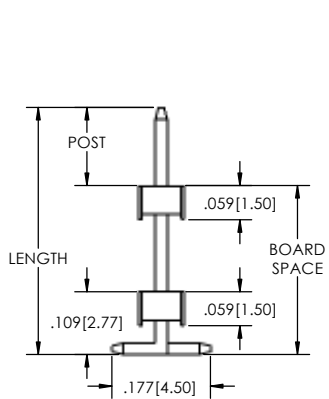
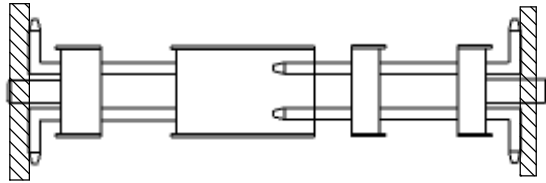


BSTCM-2 [XX] - [X] - [XXX] - [XX] - [XX] - [XXX] - [XXX] - [X] - [XX] - [X] - [XX] - [X] - [XX] - [X] - [XX] - [LF]
(A) (B) (C) (D) (E) (F) (G) (H) (I) (J) (K) (L)

- A. Pins Per Row
- 1 through 40
- B. Row Specification
- S= Single Row
- D= Double Row
- C. Desired Post Height
- Please specify
- e.g. .100(2.54)=100
- D. Pin Options
- See Pin Options below
- E. Plating Options
- See Plating Options below
- F. Desired Board Space
- Please Specify required space
- e.g. .100(2.54)=100
- .200(5.08) min.
- G. Polarized Position
- Leave blank if not needed
- If required, specify empty pin position
- e.g. 012 for Pin 12
- H. Footprint (Single Row only)
- S= pin 1 left
- M= pin 1 right
- I. Packing Information
- TR= Tape and Reel
- TB= Tube
- J. Pad
- P= Plastic
- O= No Pad
- If left blank, selected at MLE's discretion
- K. Alignment Pin
- Leave blank if not needed
- AP= With
- This option is only available for the Double Row
- L. Lead Free

Mates with:
BCSS.
BSSH.
BSSHC.
BSSQ.
BSSQC.
BSSQM.
LSMBC.
LSSHSM.
SMBC.
SSHQ.
SSHQR.
SSHR.
SSH.
SSHSM.
ULSMBC.

APPLICATION



Plating options	
G	-10µ Gold on Contact Area/ Flash on Tail
T	-Matte Tin all Over
GT	-10µ Gold on Contact Area/ Matte Tin on Tail
H	-30µ Gold on Contact Area/ Matte Tin on Tail
F	-Gold Flash over Entire Pin
FT	-Gold Flash on Contact Area/ Matte Tin on Tail

Specifications:
Current Rating: 3.0 Ampere
Insulation Resistance: 1000M Ohms Min.
Dielectric Withstanding: 500V AC
Contact Resistance: 20M Ohms Max.
Operation Temperature: -40°C to +105°C
Max. Process Temperature
Peak: 260°C up to 10 secs.
Process: 230°C up to 60 secs.
Wave: 260°C up to 6 secs.
Reflow: 260°C up to 10 secs.
Manual Solder: 350°C up to 5 secs.

Materials:
Contact Material: Phosphor Bronze
Insulator Material: Nylon 6T
Plating: Au or Sn over 50µ" (1.27) Ni

Pin Option	
Length	
.255[6.48mm]	06
.309[7.85mm]	14
.329[8.36mm]	16
.349[8.86mm]	20
.388[9.86mm]	21
.467[11.86mm]	28
.487[12.37mm]	30
.507[12.88mm]	34
.526[13.36mm]	35
.546[13.87mm]	36
.605[15.37mm]	38
.645[16.38mm]	39
.665[16.89mm]	40
.684[17.37mm]	41
.762[19.35mm]	43
.803[20.40mm]	45
.882[22.40mm]	47
1.042[26.47mm]	49
1.102[27.99mm]	50

Post + Board Space must not exceed Overall Length

Tails may be clipped to achieve specific dimensions.
Products cut to specific sizes are uncancelable/ nonreturnable.
Parts are subject to change without notice.



PROPRIETARY AND CONFIDENTIAL
THE INFORMATION CONTAINED IN THIS DRAWING IS THE SOLE PROPERTY OF Major League Electronics. ANY REPRODUCTION IN PART OR AS A WHOLE WITHOUT THE WRITTEN PERMISSION OF Major League Electronics IS PROHIBITED.

UNLESS OTHERWISE SPECIFIED:		DRAWN		NAME		DATE	
DIMENSIONS ARE IN INCHES		EOW		EOW		01/28/14	
TOLERANCES:		CHECKED		GWE		01/28/14	
ONE DECIMALS ±.100		ENG APPR.					
TWO DECIMALS ±.010		MFG APPR.					
THREE DECIMALS ±.005							
FOUR DECIMALS ±.002		INTERPRET GEOMETRIC TOLERANCING PER:		ADDRESS:			
NEXT ASSY USED ON		MATERIAL		2533 Centennial Blvd.		TITLE: BSTCM-2 SERIES	
APPLICATION		FINISH		Jeffersonville, IN 47130		SIZE DWG. NO.	
DO NOT SCALE DRAWING				Phone: 812-670-4174		REV B	
				Fax: 812-670-4175			
				E-Mail: mle@mlelectronics.com		SCALE 6:1	

SHEET 1 OF 1