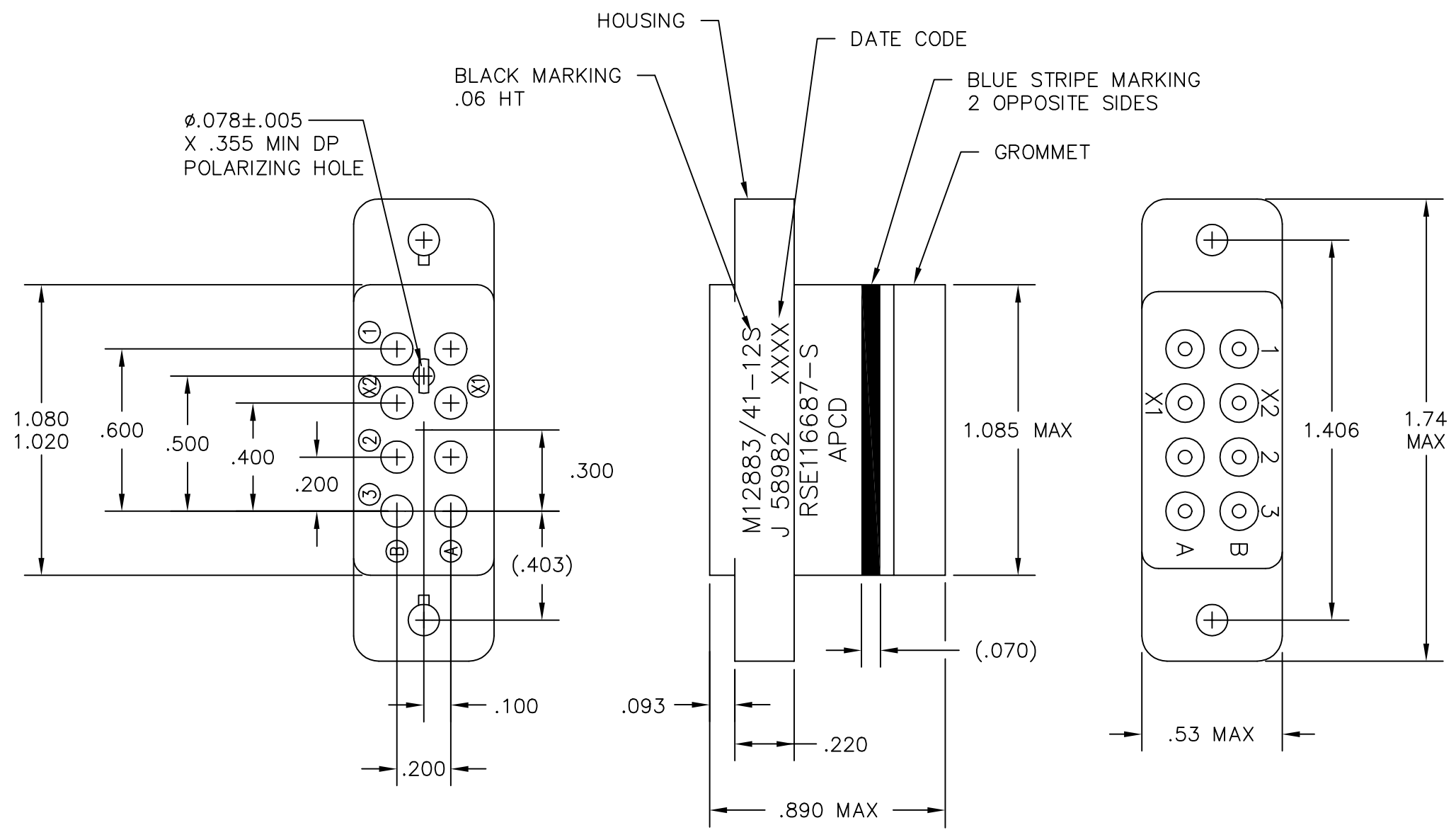
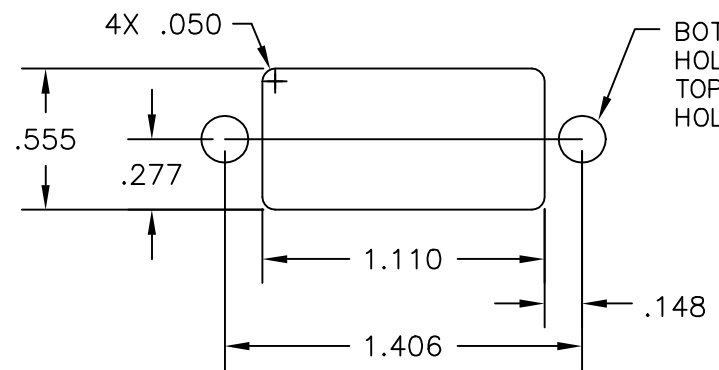


REV	ECN	APP'D
F	5534	JT 10/15/04



- NOTES:
- PART MEETS REQUIREMENTS PER MIL-PRF-12883.
 - MATERIALS:
 SOCKET BODY: POLYETHERIMIDE PER MIL-P-46184
 GROMMET: SILICONE RUBBER PER ZZ-R-765
 HARDWARE: CRES STEEL.
 CONTACT RETAINERS: BERYLLIUM COPPER
 SOCKET CONTACTS: COPPER ALLOY, HARD GOLD PLATED PER MIL-G-45204
 - OPERATING RANGE:
 TEMPERATURE: -65°C TO 125°C
 INSULATION RESISTANCE: 1000 MEGOHMS MIN.
 DIELECTRIC WITHSTANDING VOLTAGE:
 1500 VRMS AT SEA LEVEL,
 500 VRMS AT 80,000 FT. ALTITUDE
 VIBRATION: MIL-STD-202, METHOD 204,
 TEST CONDITION G
 SHOCK: MIL-STD-202, METHOD 213,
 TEST CONDITION C
 - PART SUPPLIED WITH MOUNTING HARDWARE.
 - PART SUPPLIED WITH CONTACTS PER TABLE BELOW.



PART NO.	CONTACTS SUPPLIED	MARKING
RSE116686-S	NONE	RSE116687-S
RSE116687-S	8X 16/16 M39029/92-533	

DIMENSIONS ANSI Y14.5M UNITS: INCHES ACAD FILE	TOLERANCES .XX ±.01 .XXX ±.005 ANGLES ±2°	PROJECTION 	Amphenol Pcd SPECIFICATION DRAWING			TITLE RELAY SOCKET, 8 POS, SIZE 16, CRES HARDWARE, M12883/41-12S		
			ENGR S. KONDO 10/14/2004			SIZE B	DWG NO. RSE116686-S	REV F
ORIGINAL	THIS DOCUMENT CONTAINS PROPRIETARY INFORMATION WHICH IS THE CONFIDENTIAL PROPERTY OF AMPHENOL PCD INC. PEABODY, MA			CHKD R. NEWMAN 10/15/04	CODE: 58982		SCALE: 2X	SHEET 1 OF 1
			APPD J. TON 10/15/04					

RSE116686-S

RSE116686-S