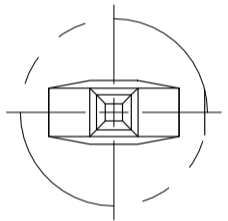
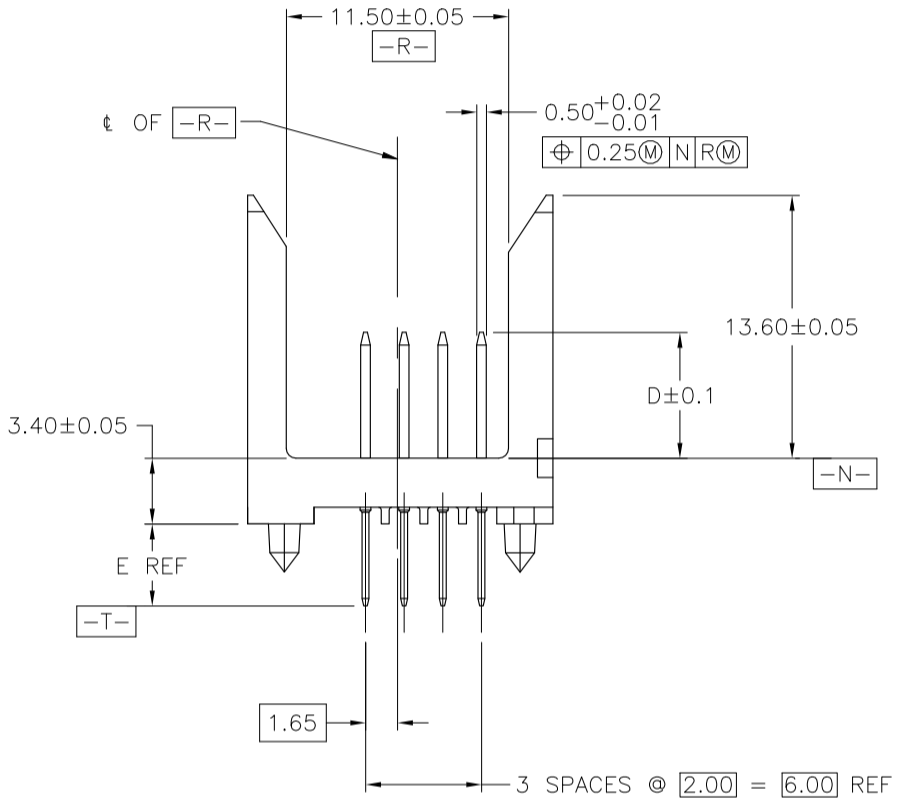
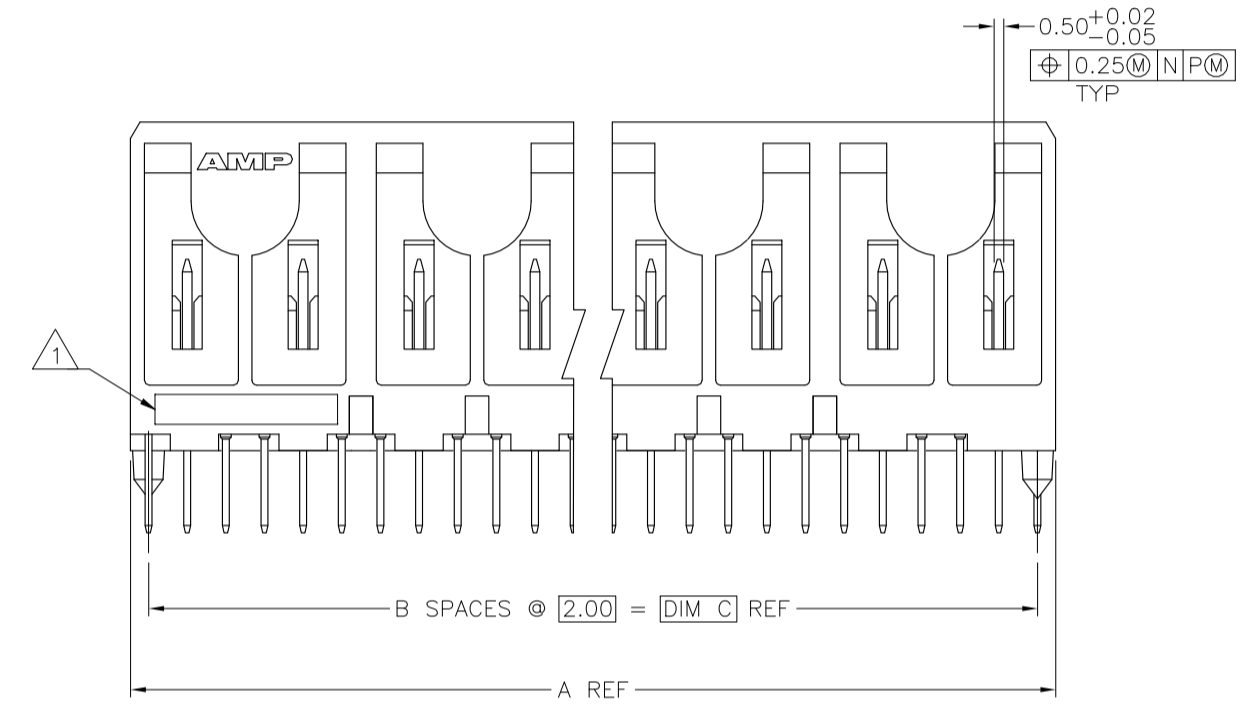
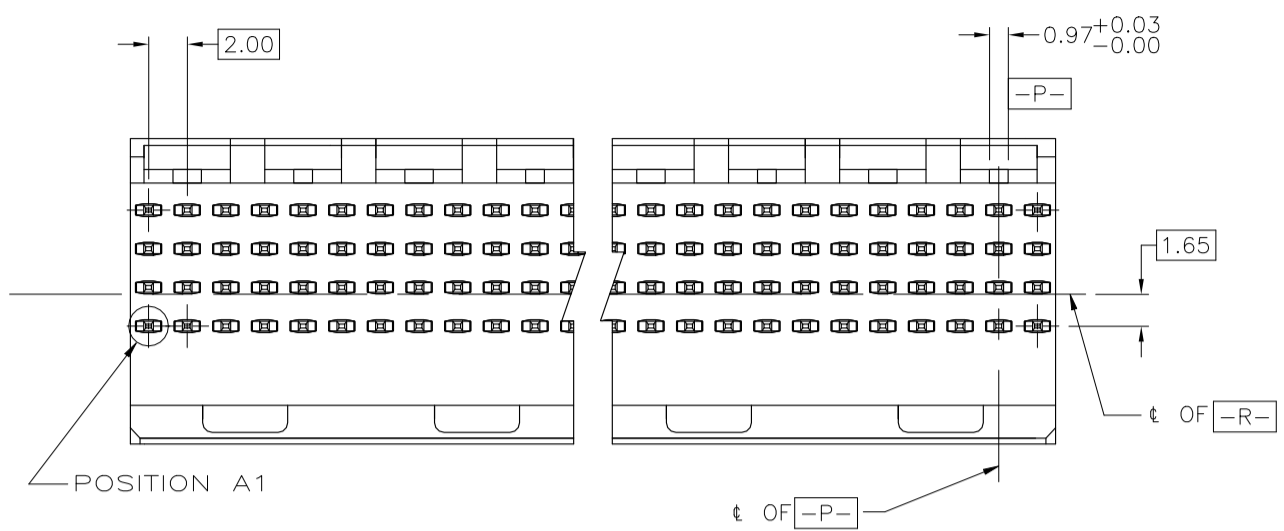
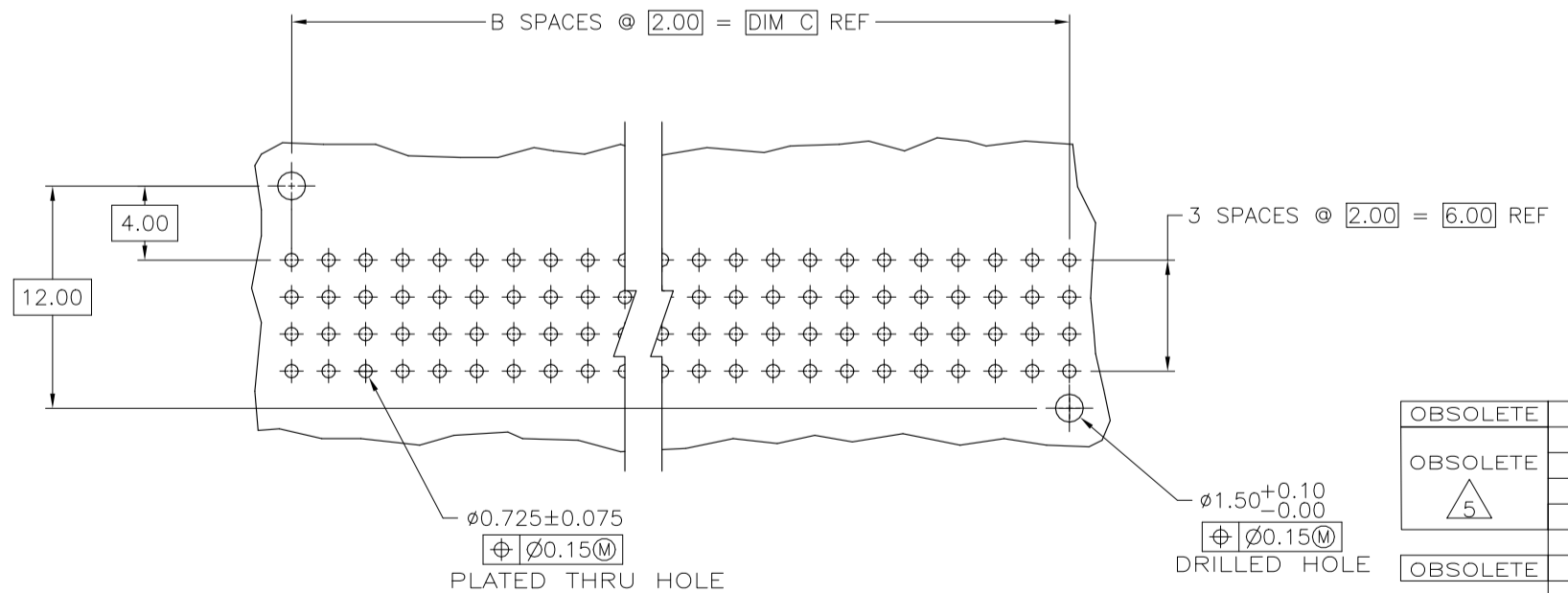
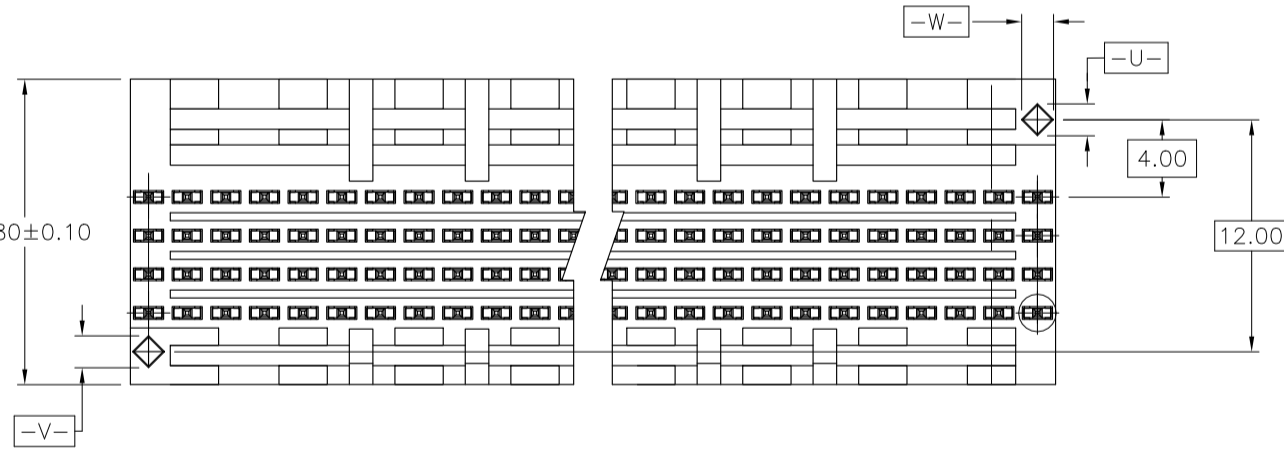


| REVISIONS | | | | | |
|-----------|-----|---------------------------|-----------|-----|------|
| P | LTR | DESCRIPTION | DATE | OWN | APVD |
| A3 | | REVISED PER ECO-20-013368 | 24SEP2020 | RZ | HL |



DETAIL Z
SCALE 20:1



RECOMMENDED CIRCUIT PATTERN
PER IPC-D300 TYPE II, CLASS C
(COMPONENT SIDE)

- 1 HOUSING MATERIAL: LIQUID CRYSTAL POLYMER PER ASTM D5138 LCPO00 G30A 32250.
- 2 CONTACT MATERIAL: PHOSPHOR BRONZE.
- 3 CONTACT FINISH:
UNDERPLATE (ENTIRE CONTACT):
0.00127 MIN NICKEL PER SAE-AMS-QQ-N-290.
ON MATING SURFACES:
CONFORMS TO ALL TESTING SPECIFIED FOR TELCORDIA UNCONTROLLED ENVIRONMENT.
ON LEADS
0.00381 MIN TIN PER ASTM B 545 OVER UNDERPLATE.
LUBRICATION (MIN MATING SURFACES):
SURFACE CONDITIONER AFTER PLATING.
- 4 PART MARKING, LOCATED APPROXIMATELY AS SHOWN.
- 5 OBSOLETE PARTS: OBSOLETE CIS STREAMLINING PER D.RENAUD/D.SINISI

| | | | | | | | | |
|----------|------|-----|-----|----|--------|--------|------------|-------------|
| OBSOLETE | 4.25 | 6.5 | 34 | 17 | 35.88 | 3 | 72 | 1-5536501-1 |
| OBSOLETE | 4.25 | 6.5 | 130 | 65 | 131.88 | 3 | 264 | 1-5536501-0 |
| OBSOLETE | 4.25 | 6.5 | 106 | 53 | 107.88 | 3 | 216 | 5536501-9 |
| OBSOLETE | 4.25 | 6.5 | 118 | 59 | 119.88 | 3 | 240 | 5536501-8 |
| OBSOLETE | 4.25 | 6.5 | 82 | 41 | 83.88 | 3 | 168 | 5536501-7 |
| OBSOLETE | 4.25 | 6.5 | 58 | 29 | 59.88 | 3 | 120 | 5536501-6 |
| OBSOLETE | 4.25 | 6.5 | 70 | 35 | 71.88 | 3 | 144 | 5536501-5 |
| OBSOLETE | 4.25 | 6.5 | 94 | 47 | 95.88 | 3 | 192 | 5536501-4 |
| OBSOLETE | 4.25 | 6.5 | 46 | 23 | 47.88 | 3 | 96 | 5536501-3 |
| OBSOLETE | 4.25 | 6.5 | 22 | 11 | 23.88 | 3 | 48 | 5536501-2 |
| OBSOLETE | 4.25 | 6.5 | 10 | 5 | 11.88 | 3 | 24 | 5536501-1 |
| | E | D | C | B | A | FINISH | NO OF POSN | PART NUMBER |

THIS DRAWING IS A CONTROLLED DOCUMENT.

OWN: B. MCMASTER 30AUG04
CHK: R. WERTZ 30AUG04
APVD: R. WERTZ 30AUG04

TE Connectivity

Z-PACK 2mm FB, SIGNAL MODULE, PIN ASSEMBLY
2mm

APPLIC. SPEC: PRODUCT SPEC

SIZE: A1 CAGE CODE: 00779 DRAWING NO: 5536501

WEIGHT: 0.000000

CUSTOMER DRAWING SCALE: 4:1 SHEET: 1 OF 1 REV: A3