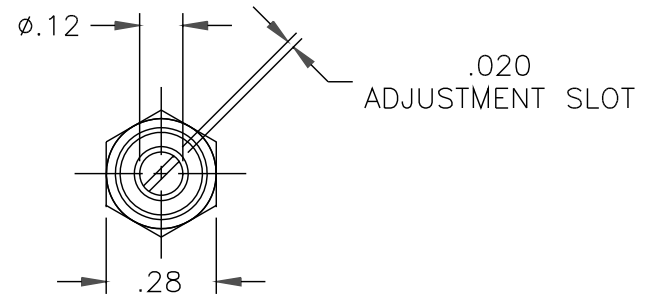
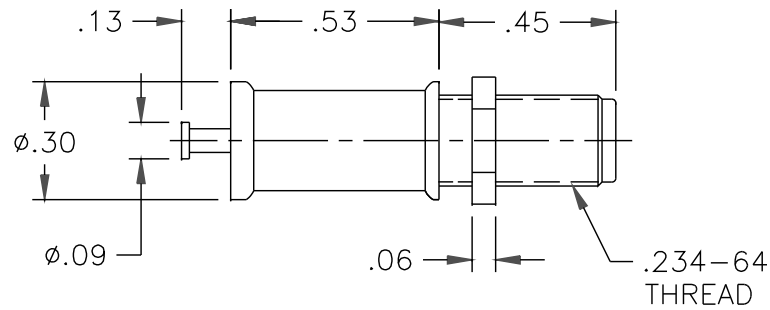


| DATE | SYM | REVISION | RECORD | AUTH | DR | CK |
|------|-----|----------|--------|------|----|----|
| | | | | | | |
| | | | | | | |
| | | | | | | |
| | | | | | | |



NOTES:

1. CAPACITANCE RANGE, pF: 1.5 TO 40.0
2. DC WORKING VOLTAGE AT 40.0 pF: 1000 VDC
3. DC WITHSTANDING VOLTAGE AT 40.0 pF: 2000 VDC
4. Q FACTOR AT 100 MHz : 2000
5. INSULATION RESISTANCE: 10^6 MEGOHMS AT 25°C
6. TEMPERATURE COEFFICIENT: 0 ± 100 PPM/°C
7. OPERATING TEMPERATURE: -65°C TO +125°C
8. TUNING TORQUE: 0.5 TO 5.0 IN-OZ
9. ROTATIONAL LIFE: 600 TURNS
10. VIBRATION: 50g AT 10-2000 Hz
11. SHOCK: 1500g, 0.5 MILLISECS.
12. SEAL: 40 PSI

| | | | |
|--|------------------------------|--|--|
| TOLERANCES (EXCEPT AS NOTED) | | VOLTRONICS CORPORATION 100 FORD RD. DENVER N.J. | |
| DECIMAL XXX $\pm .005$ XX $\pm .016$ | SCALE 2 : 1 | | |
| FRACTIONAL - | TITLE OUTLINE DWG. AT40HV | APPROVED BY A.GOLDBERG | |
| ANGULAR - | DATE 12/03/09 | DRAWING NUMBER 70,755 | |