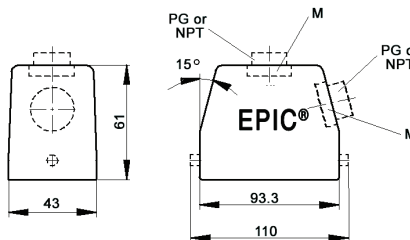
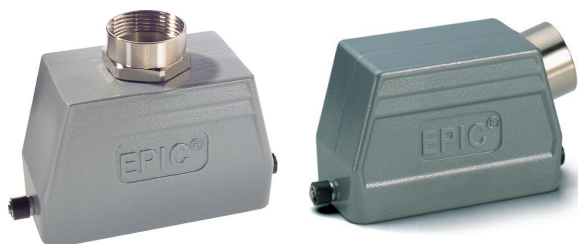


EPIC® HB 16 standard hood

Single-entry hood with single lever bolts




all dimensions are in mm

Technical data

IP Protection class: UL 50E Type 12
NEMA 4
IP65

Complete the installation

 HB dust covers
page 429

Approvals



PG

PG hood		SKINTOP® gland	
size	part number	plastic	metal
Top entry			
PG 21	100809	53015050	52015750
Side entry			
PG 21	100829	53015050	53015750
PG 21	100929	53015060	52015760

PG hood provided with EPIC® SM/SP gland

NPT

NPT hood		SKINTOP® gland	
size	part number	plastic	metal
Top entry			
¾"	100809NP	S1134	53112034
Side entry			
¾"	100829NP	S1134	53112034
1"	100929NP	S1101	53112044

NPT hood provided with NPT fitting

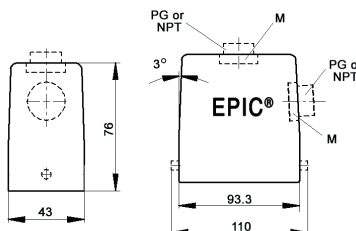
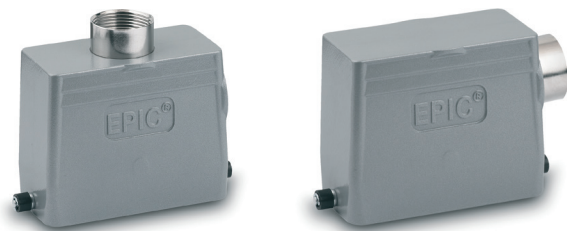
metric

Metric hood		SKINTOP® gland	
size	part number	plastic	metal
Top entry*			
M25	19080900	53111030	53112030
Side entry			
M25	19082900	53111030	53112030
M32	19092900	53111040	53112040

* Metric top-entry hoods do not come with a neck

EPIC® HB 16 high profile hood

Single-entry hood with single lever bolts




all dimensions are in mm

Technical data

IP Protection class: UL 50E Type 12
NEMA 4
IP65

Complete the installation

 HB dust covers
page 429

Approvals



PG

PG hood		SKINTOP® gland	
size	part number	plastic	metal
Top entry			
PG 21	700942	53015050	52015750
PG 29	700944	53015060	52015760
Side entry			
PG 21	701042	53015050	52015750
PG 29	701044	53015060	52015760

PG hood provided with EPIC® SM/SP gland

NPT

NPT hood		SKINTOP® gland	
size	part number	plastic	metal
Top entry			
¾"	700942NP	S1134	53112034
1"	700944NP	S1101	53112044
Side entry			
¾"	701042NP	S1134	53112034
1"	701044NP	S1101	53112044

NPT hood provided with NPT fitting

metric

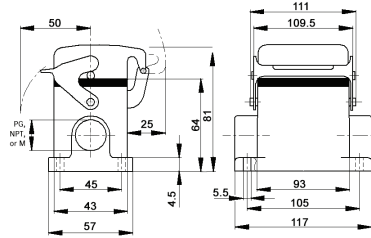
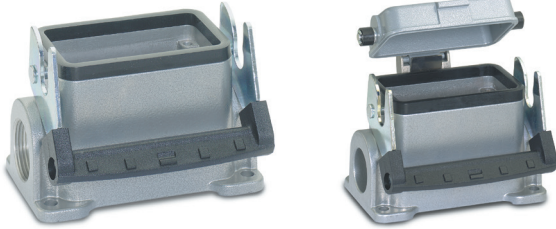
Metric hood		SKINTOP® gland	
size	part number	plastic	metal
Top entry*			
M25	79094200	53111030	53112030
M32	79094400	53111040	53112040
M40	79094600	53111050	53112050
Side entry			
M25	79104200	53111030	53112030
M32	79104400	53111040	53112040
M40	79104800	53111050	53112050

* Metric hoods do not come with a neck

Recommended SKINTOP® assumes minimal OD variance. Additional configurations are available; please see our SKINTOP® section.
If not otherwise specified, all values relating to the product are nominal values.
Photographs are not to scale and are not true representations of the products in question.

EPIC® HB 16 standard surface mount base

Surface mount base with single lever



all dimensions are in mm

Technical data

IP Protection class: UL 50E Type 12
NEMA 4
IP65

Complete the installation



HB dust covers
page 429

Approvals



PG

PG base size	PG base part number	Dust cover	SKINTOP® gland	
			plastic	metal
One entry				
21	100749	no	53015050	52015750
21	100769	yes	53015050	52015750
Two entries				
21	100759	no	53015050	52015750
21	100789	yes	53015050	52015750

PG base provided with EPIC® SM/SP gland

NPT

NPT base size	NPT base part number	Dust cover	SKINTOP® gland	
			plastic	metal
One entry				
¾"	100749NP	no	S1134	53112034
¾"	100769NP	yes	S1134	53112034
Two entries				
¾"	100759NP	no	S1134	53112034
¾"	100789NP	yes	S1134	53112034

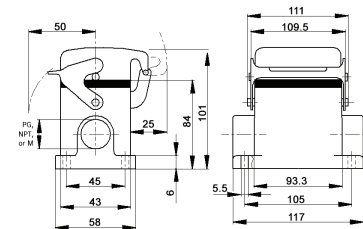
NPT base provided with NPT fitting

metric

Metric base size	Metric base part number	Dust cover	SKINTOP® gland	
			plastic	metal
One entry				
25	19074900	no	53111030	53112030
25	19076900	yes	53111030	53112030
Two entries				
25	19075900	no	53111030	53112030
25	19078900	yes	53111030	53112030

EPIC® HB 16 high profile surface mount base

Surface mount base with single lever



all dimensions are in mm

Technical data

IP Protection class: UL 50E Type 12
NEMA 4
IP65

Complete the installation



HB dust covers
page 429

Approvals



PG

PG base size	PG base part number	Dust cover	SKINTOP® gland	
			plastic	metal
One entry				
21	701102	no	53015050	52015750
21	701142	yes	53015050	52015750
29	701104	no	53015060	52015760
29	701144	yes	53015060	52015760
Two entries				
21	701112	no	53015050	52015750
21	701152	yes	53015050	52015750
29	701114	no	53015060	52015760
29	701154	yes	53015060	52015760

NPT

NPT base size	NPT base part number	Dust cover	SKINTOP® gland	
			plastic	metal
One entry				
¾"	701102NP	no	S1134	53112034
¾"	701142NP	yes	S1134	53112034
1"	701104NP	no	S1101	53112044
1"	701144NP	yes	S1101	53112044
Two entries				
¾"	701112NP	no	S1134	53112034
¾"	701152NP	yes	S1134	53112034
1"	701114NP	no	S1101	53112044
1"	701154NP	yes	S1101	53112044

NPT base provided with NPT fitting

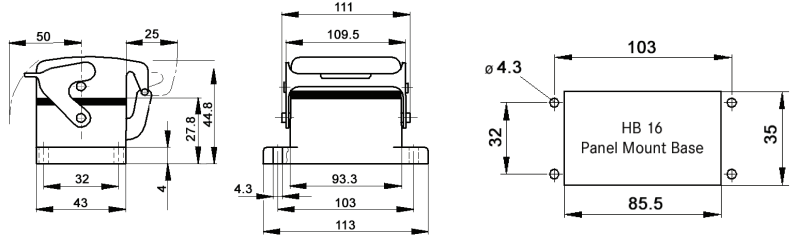
metric

Metric base size	Metric base part number	Dust cover	SKINTOP® gland	
			plastic	metal
One entry				
25	79110200	no	53111030	53112030
25	79114200	yes	53111030	53112030
32	79110400	no	53111040	53112040
32	79114400	yes	53111040	53112040
Two entries				
25	79111200	no	53111030	53112030
25	79115200	yes	53111030	53112030
32	79111400	no	53111040	53112040
32	79115400	yes	53111040	53112040

Photographs are not to scale and are not true representations of the products in question. Recommended SKINTOP® assumes minimal OD variance. Additional configurations are available; please see our SKINTOP® section. If not otherwise specified, all values relating to the product are nominal values.

EPIC® HB 16 panel mount base

Panel mount base with single lever



all dimensions are in mm

Technical data

IP Protection class: UL 50E Type 12
NEMA 4
IP65

Complete the installation



HB dust covers
page 429

Approvals



Dust cover included	Part number
no	10072900
yes	10073900

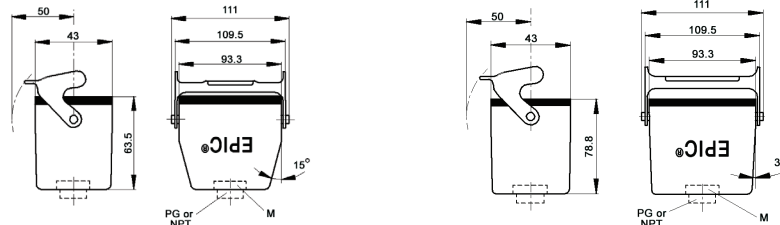
EPIC® HB 16 cable coupler hood

Cable coupler with single lever



standard profile

high profile



all dimensions are in mm

Technical data

IP Protection class: UL 50E Type 12
NEMA 4
IP65

Complete the installation



HB dust covers
page 429

Approvals



PG

PG coupler		SKINTOP® gland	
size	part number	plastic	metal
Standard profile			
PG 21	100869	53015050	52015750
High profile			
PG 21	700922	53015050	52015750
PG 29	700924	53015060	52015760

PG coupler provided with EPIC® SM/SP gland

NPT

NPT coupler		SKINTOP® gland	
size	part number	plastic	metal
Standard profile			
3/4"	100869NP	S1134	53112034
High profile			
3/4"	700922NP	S1134	53112034
1"	700924NP	S1101	53112044

NPT coupler provided with NPT fitting

metric

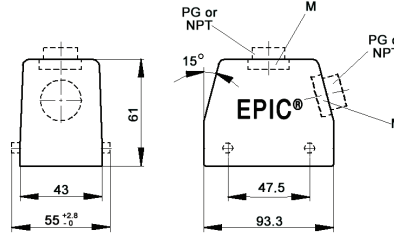
Metric coupler*		SKINTOP® gland	
size	part number	plastic	metal
Standard profile			
M25	19086900	53111030	53112030
High profile			
M25	79092200	53111030	53112030
M32	79092400	53111040	53112040

* Metric couplers do not come with a neck

Recommended SKINTOP® assumes minimal OD variance. Additional configurations are available; please see our SKINTOP® section. If not otherwise specified, all values relating to the product are nominal values. Photographs are not to scale and are not true representations of the products in question.

EPIC® HB 16 standard hood

Hood with double lever bolts



all dimensions are in mm



Technical data

IP Protection class: UL 50E Type 4, 12 IP65

Complete the installation

HB dust covers page 429

Approvals

UL US RoHS VDE

PG

PG hood		SKINTOP® gland	
size	part number	plastic	metal
Top entry			
PG 21	100800	53015050	52015750
PG 29	100900	53015060	52015760
Side entry			
PG 21	100820	53015050	52015750
PG 29	100920	53015060	52015760

PG hood provided with EPIC® SM/SP gland

NPT

NPT hood		SKINTOP® gland	
size	part number	plastic	metal
Top entry			
3/4"	100800NP	S1134	53112034
1"	100900NP	S1101	53112044
Side entry			
3/4"	100820NP	S1134	53112034
1"	100920NP	S1101	53112044

NPT hood provided with NPT fitting

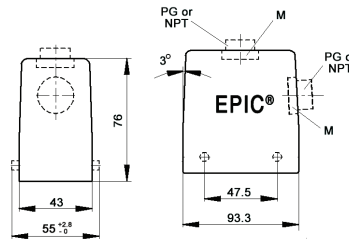
metric

Metric hood		SKINTOP® gland	
size	part number	plastic	metal
Top entry			
M25	19080000*	53111030	53112030
M25x2	19080500	53111030	53112030
M32	19090000*	53111040	53112040
Side entry			
M25	19082000	53111030	53112030
M32	19092000	53111040	53112040

* Metric top-entry hoods do not come with a neck

EPIC® HB 16 high profile hood

Hood with double lever bolts



all dimensions are in mm



Technical data

IP Protection class: UL 50E Type 4, 12 IP65

Complete the installation

HB dust covers page 429

Approvals

UL US RoHS VDE

PG

PG hood		SKINTOP® gland	
size	part number	plastic	metal
Top entry			
PG 21	701002	53015050	52015750
PG 29	701004R	53015060	52015760
Side entry			
PG 21	701022	53015050	52015750
PG 29	701024	53015060	52015760

PG hood provided with EPIC® SM/SP gland

NPT

NPT hood		SKINTOP® gland	
size	part number	plastic	metal
Top entry			
3/4"	701002NP	S1134	53112034
1"	701004NP	S1101	53112044
Side entry			
3/4"	701022NP	S1134	53112034
1"	701024NP	S1101	53112044

NPT hood provided with NPT fitting

metric

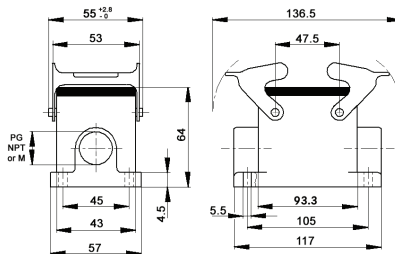
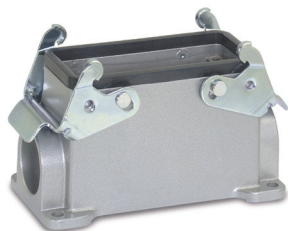
Metric hood*		SKINTOP® gland	
size	part number	plastic	metal
Top entry			
M25	79100200	53111030	53112030
M25x2	44422018	53111030	53112030
M32	79100400	53111040	53112040
M32x2	79128600	53111040	53112040
M40	79100800	53111050	53112050
Side entry			
M25	79102200	53111030	53112030
M32	79102400	53111040	53112040
M40	79102800	53111050	53112050

* Metric hoods do not come with a neck

Recommended SKINTOP® assumes minimal OD variance. Additional configurations are available; please see our SKINTOP® section. If not otherwise specified, all values relating to the product are nominal values. Photographs are not to scale and are not true representations of the products in question.

EPIC® HB 16 standard surface mount base

Surface mount base with double levers




all dimensions are in mm

Technical data

IP Protection class: UL 50E Type 4, 12
IP65

Complete the installation

 HB dust covers
page 429

Approvals



PG

PG base		SKINTOP® gland	
size	part number	plastic	metal
One entry			
PG 21	100740	53015050	52015750
Two entries			
PG 21	100750	53015050	52015750

PG base provided with EPIC® SM/SP gland

NPT

NPT base		SKINTOP® gland	
size	part number	plastic	metal
One entry			
¾"	100740NP	S1134	53112034
Two entries			
¾"	100750NP	S1134	53112034

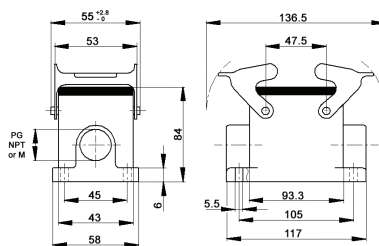
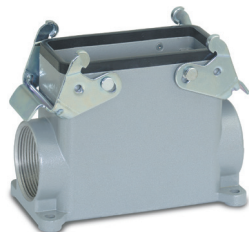
NPT base provided with NPT fitting

metric

Metric base		SKINTOP® gland	
size	part number	plastic	metal
One entry			
M25	19074000	53111030	53112030
Two entries			
M25	19075000	53111030	53112030

EPIC® HB 16 high profile surface mount base

Surface mount base with double levers




all dimensions are in mm

Technical data

IP Protection class: UL 50E Type 4, 12
IP65

Complete the installation

 HB dust covers
page 429

Approvals



PG

PG base		SKINTOP® gland	
size	part number	plastic	metal
One entry			
PG 21	700852	53015050	52015750
PG 29	700854	53015060	52015760
Two entries			
PG 21	700862	53015050	52015750
PG 29	700864	53015060	52015760

PG base provided with EPIC® SM/SP gland

NPT

NPT base		SKINTOP® gland	
size	part number	plastic	metal
One entry			
¾"	700852NP	S1134	53112034
1"	700854NP	S1101	53112044
Two entries			
¾"	700862NP	S1134	53112034
1"	700864NP	S1101	53112044

NPT base provided with NPT fitting

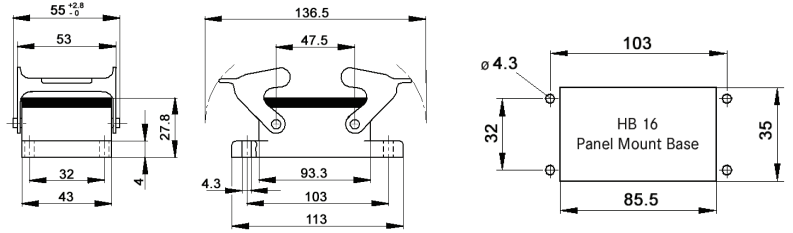
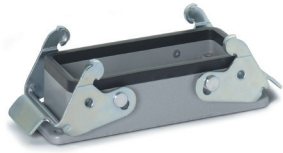
metric

Metric base		SKINTOP® gland	
size	part number	plastic	metal
One entry			
M25	79085200	53111030	53112030
M32	79085400	53111040	53112040
Two entries			
M25	79086200	53111030	53112030
M32	79086400	53111040	53112040

Recommended SKINTOP® assumes minimal OD variance. Additional configurations are available; please see our SKINTOP® section. If not otherwise specified, all values relating to the product are nominal values. Photographs are not to scale and are not true representations of the products in question.

EPIC® HB 16 panel mount base

Panel mount base with double levers



all dimensions are in mm

Technical data	
IP Protection class:	UL 50E Type 4, 12 IP65

Complete the installation

HB dust covers
page 429

Approvals

Dust cover included	Part number
no	100720C0

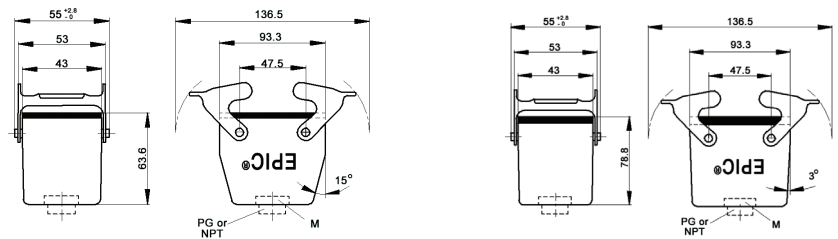
EPIC® HB 16 cable coupler hood

Cable coupler with double levers



standard profile

high profile



all dimensions are in mm

Technical data	
IP Protection class:	UL 50E Type 4, 12 IP65

Complete the installation

HB dust covers
page 429

Approvals

PG

PG coupler size	part number	SKINTOP® gland	
		plastic	metal
Standard profile			
PG 21	100860	53015050	52015750
High profile			
PG 29	700904	53015060	52015760

PG coupler provided with EPIC® SM/SP gland

NPT

NPT coupler size	part number	SKINTOP® gland	
		plastic	metal
Standard profile			
3/4"	100860NP	S1134	53112034
High profile			
3/4"	700902NP	S1134	53112034
1"	700904NP	S1101	53112044

NPT coupler provided with NPT fitting

metric

Metric coupler* size	part number	SKINTOP® gland	
		plastic	metal
Standard profile			
M25	19086000	53111030	53112030
High profile			
M25	79090200	53111030	53112030
M32	79090400	53111040	53112040

* Metric couplers do not come with a neck

Recommended SKINTOP® assumes minimal OD variance. Additional configurations are available; please see our SKINTOP® section. If not otherwise specified, all values relating to the product are nominal values. Photographs are not to scale and are not true representations of the products in question.